

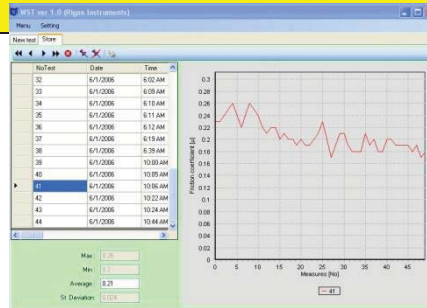
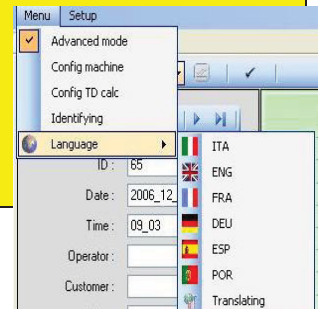
DYNAMIC SURFACE SMOOTHNESS TESTER mod. SST, SST1, SST2

STANDARD: IEC 60851-3.B3/B4, NEMA MW 750, EMERSON TP-131

TEST PROCEDURE: As coefficient of friction, which is defined as $u=Fr/Fn$, where Fr is the friction power and F_n the load applied on the wire. The test wire is moved at a speed of 15m/1' between a basic plate and a moveable loading plate, both have a defined surface roughness. The test load is mechanically connected to a dynamometer, which due to the roughness of the wire surface, detect the power friction, the values detected shall be displayed and recorded at desired time intervals. The statistical evaluation is taken from 50 single values.

The coefficient of friction value is an indication of the magnet wire insulation lubricity. The lubricity of the insulation affects the spooling and windability of magnet wire into coils and its subsequent assembly into the finished products.

- Suitable for wire diameter range from 0.05 mm up to 2.0 mm
- Load cell to measure the coefficient of friction, resolution 0.01N.
- Test speed adjustable from 1 up to 30 m/1'.
- Test management with pc, selection of up to 1000 measurements per test, calculation and print out of each single value, minimum, maximum, average and standard deviation, with graphical representation, powerful data base, customisable print out report.
- Multi languages.
- Network capability and remote technical assistance.
- Winding wheel for ease remove of tested wire.
- Complete of weights according to IEC and NEMA standard.
- Two test methods in one equipment (mod. SST2).



TECHNICAL SPECIFICATIONS

Model	Power supply	Dimensions	Weight
SST	230Vac 50/60Hz 1 phase 450VA	w 550 x h 560 x d 630 mm	32 kg 70.4 lb
SST1	230Vac 50/60Hz 1 phase 450VA	w 550 x h 560 x d 630 mm	35 kg 77.0 lb
SST2	230Vac 50/60Hz 1 phase 500VA	w 550 x h 660 x d 630 mm	44 kg 96,8 lb



model SST (DIN 46453, IEC60851-3.B3)



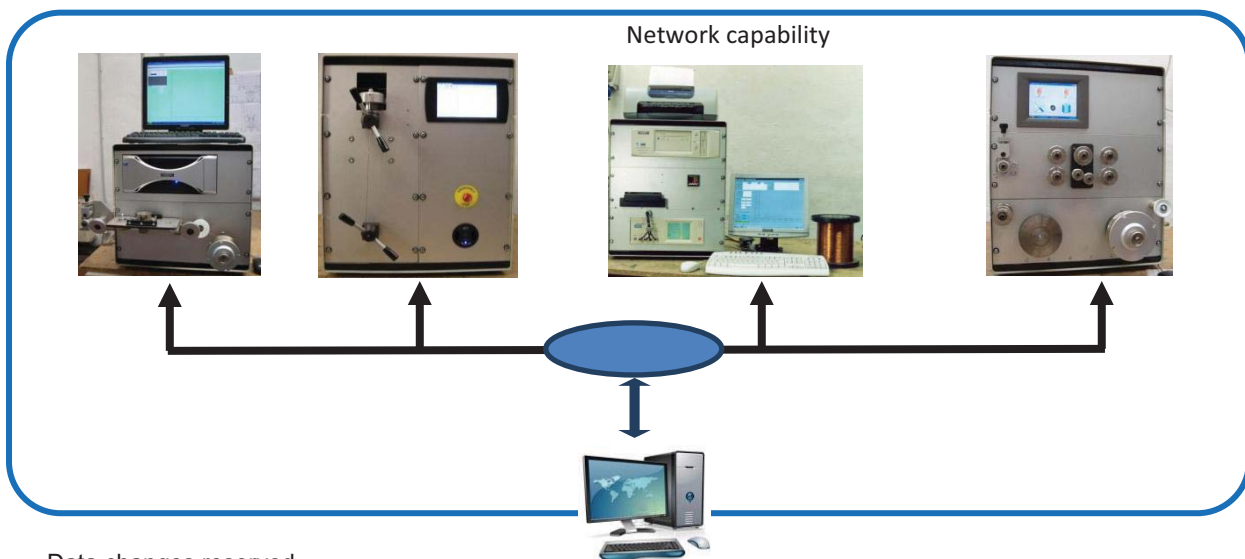
mod. SST1 (IEC 60851-3.B4, NEMA MW 750)



mod. SST2 (IEC 60851-3.B3/B4, NEMA MW 750)

OPTIONS:

- BAR Bar code reader
- EME Test weight according to Emerson standard (only on mod. SST1, SST2)



Data changes reserved